

INVITATION FOR BIDS
MONITORING WELL DRILLING SERVICES
TAZEWELL COUNTY, VIRGINIA

Tazewell County, Virginia is soliciting BIDS for services from qualified vendors with experience in monitoring well drilling services. These services will be located at 3013 Lynn Hollow Road, North Tazewell, VA 24630.

The terms and conditions of this Invitation for Bids, all of which are material to this Invitation for Bids, are set forth at the official Tazewell County, Virginia website:
<https://tazewellcountyva.org/procurement/>

Bids must be received no later than 2:00pm on June 17,2026 at which time the bids will be opened in the board room of the Tazewell County Administration Building. The envelope must be clearly marked "Monitoring Well Bid Services" and addressed to Kenneth Dunford Jr. Director of Engineering 135 Court St suite 318, Main Street, Tazewell VA 24651.

Small businesses and businesses owned by women or minorities are encouraged to apply. Bidders shall comply with any and all national or state legislative, executive, and judicial orders or decrees prohibiting discrimination in employment regarding race, color, creed, national origin, gender, gender identification or preference, disability, or veterans' status. Bidders shall certify that they do not maintain or provide for their employees any facilities that are segregated on the basis of race, color, creed, national origin, gender, gender identification or preference, disability, or veterans' status.

Tazewell County reserves the right to reject all bids; waive informalities; and contract with the applicant whose bid is in the best interests of Tazewell County, Virginia. Please direct inquiries to the Tazewell County Director of Engineering at kenneth.dunford@tazewellcounty.org. Written inquiries, and the answers thereto, shall be made publicly available to all interested vendors.

Per Order of the Tazewell County Board of Supervisors
C. Eric Young – Tazewell County Administrator

TAZEWELL COUNTY LANDFILL WELL
DRILLING/INSTALLATION/DEVELOPMENT SPECIFICATIONS:

Purpose: Drilling, installation, and development of two new groundwater monitoring wells at Tazewell County, Virginia landfill

Project Location- Tazewell County Landfill- 3013 Lynn Hollow Road, North Tazewell, VA 24630.

Specific Scope of Services: Drill and install two groundwater monitoring wells via air-rotary or sonic methods to the following depths (well screens will be installed at the base of each borehole). All boreholes will be drilled dry (no water to be used during drilling unless absolutely necessary) to the following approximate depths:

Well 1 Well: approximately 210feet

Well 2 Well: approximately 210 feet

Access to the wells near the former animal shelter should be sufficient, as that well will be drilled within the old parking lot area.

Project Timing: All monitoring drill and installation will need to be completed within 45 days of contract execution

Borehole Diameter: 6 inches (previous wells contain anywhere from about 50-200+ feet of surface casing inside an 8 or 10-inch diameter top of borehole). For bidding purposes, use 145 feet of black steel surface casing in each borehole. Galvanized steel casing is PROHIBITED under any circumstances. Below the surface casing, drilling diameter will be 6-inches to total depth. In summary, bid 290 total feet of larger diameter borehole (8 or 10 inches) and 290 total feet of black steel surface casing. For the 6-inch borehole diameter, use a total footage of 130 feet.

Monitoring Well Materials:

The PVC well screen and riser pipe shall be Schedule 40 PVC with threaded couplings. Screen slot sizes shall be 0.01. Each joint shall have a rubber O-ring to prevent leakage. All monitoring well PVC pipe shall be delivered decontaminated and in individual plastic wrapping as packaged by the manufacturer.

The filter sand shall be a clean quartz filter sand of sizing compatible with the 0.01 screen slot sizes. The filter pack seal shall be bentonite chips or pellets to be placed at least 5 feet above the sand filter pack. It is permissible (and preferred) that the remainder of the annual space to the surface can be bentonite chips. Chips shall be hydrated in 5 feet lifts where above the water table. If cement grouting is utilized to complete the annual seal, the cement must be mixed with a bentonite powder additive and installed in no more than 75 feet lifts to avoid melting or damaging the PVC pipe.

Well Development: Each completed well must be fully developed upon completion until sediment-free water is obtained. For bidding purposes, assume 4 hours per well.

Development may be conducted by any of the following methods:

- Bailing
- Pumping/Over-pumping (low volume pumping and will likely pump from at least 2 levels within the 20' well screen)
- Surging/Bailing
- Jetting
- Compressed Air/Airlift Pumping (if used, will need to use an appropriate air filter. Will also likely lift from at least 2 levels within the 20' well screen)

NOTE: Any well development materials that are re-used between wells must be cleaned prior to use in each well (for example, well pumps or surge blocks).

Other Incidentals: The successful contractor will be responsible for digging a drill water return collection sump to ensure formation water does not encroach upon surrounding properties. It is likely that a skid steer or comparable machinery will suffice in the sump construction.

Contractor shall be required to make sure all earthwork is prepared for the Drilling location.

Bid Information

All Questions Shall be submitted in writing preferably by email Kenneth Dunford at Kenneth.Dunford@tazewellcounty.org

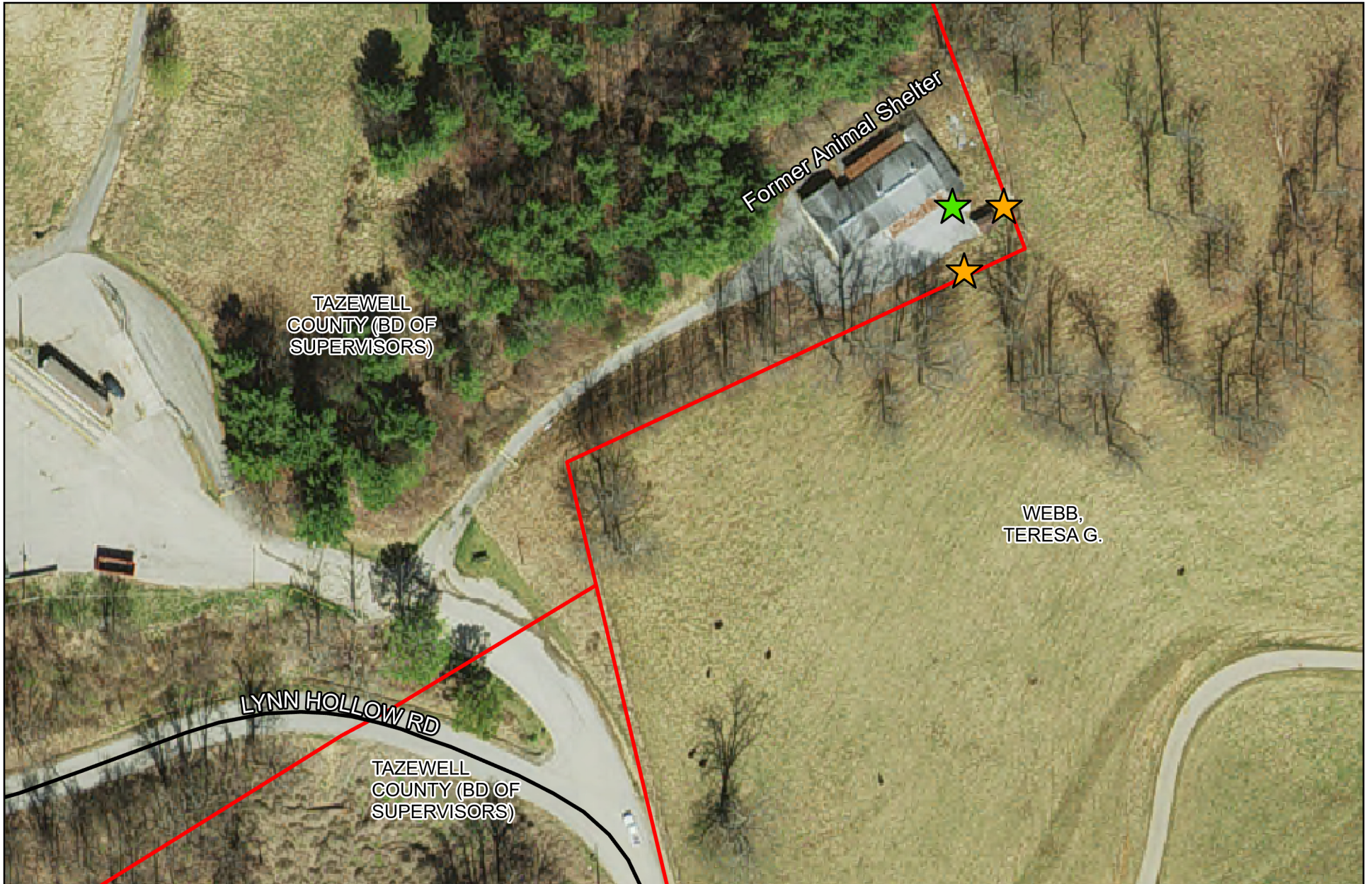
Questions will be accepted until 12:00pm on 6/12/26

If you would like to visit the site please contact Kenneth Dunford at Kenneth.Dunford@tazewellcounty.org or by phone at 276-385-1254.

Proposals shall contain at a minimum the following:

- Drilling prices listed on a per-foot basis for each diameter, and totaled for each well
- Surface casing cost listed on a per-foot basis
- Monitoring well installation costs for each well (costs may be shown on a per-foot basis)
- Protective bollard cost (lump sum will be sufficient). Assume 4 per well on each corner.
- Protective well cover (the black steel surface casing may be used as the protective well cover as long as it extends about 3 feet above the ground surface) and concrete well pad cost (lump sum will be sufficient)
- Mobilization/demobilization costs
- Costs for well development as well as method to be used (may be shown as hourly or on a per-well basis)
- Per-diem costs shown separately
- Sump construction costs
- Any other incidentals not associated with the above (list each)
- Any Earthwork that may need to be performed
- Total project cost and estimated project duration

	Price per foot	Total price
Well 1		
Well 2		
Total		



-  Existing Wells
-  Proposed Wells
-  Parcels
-  Roads

Proposed Monitoring Wells near the former Animal Shelter

