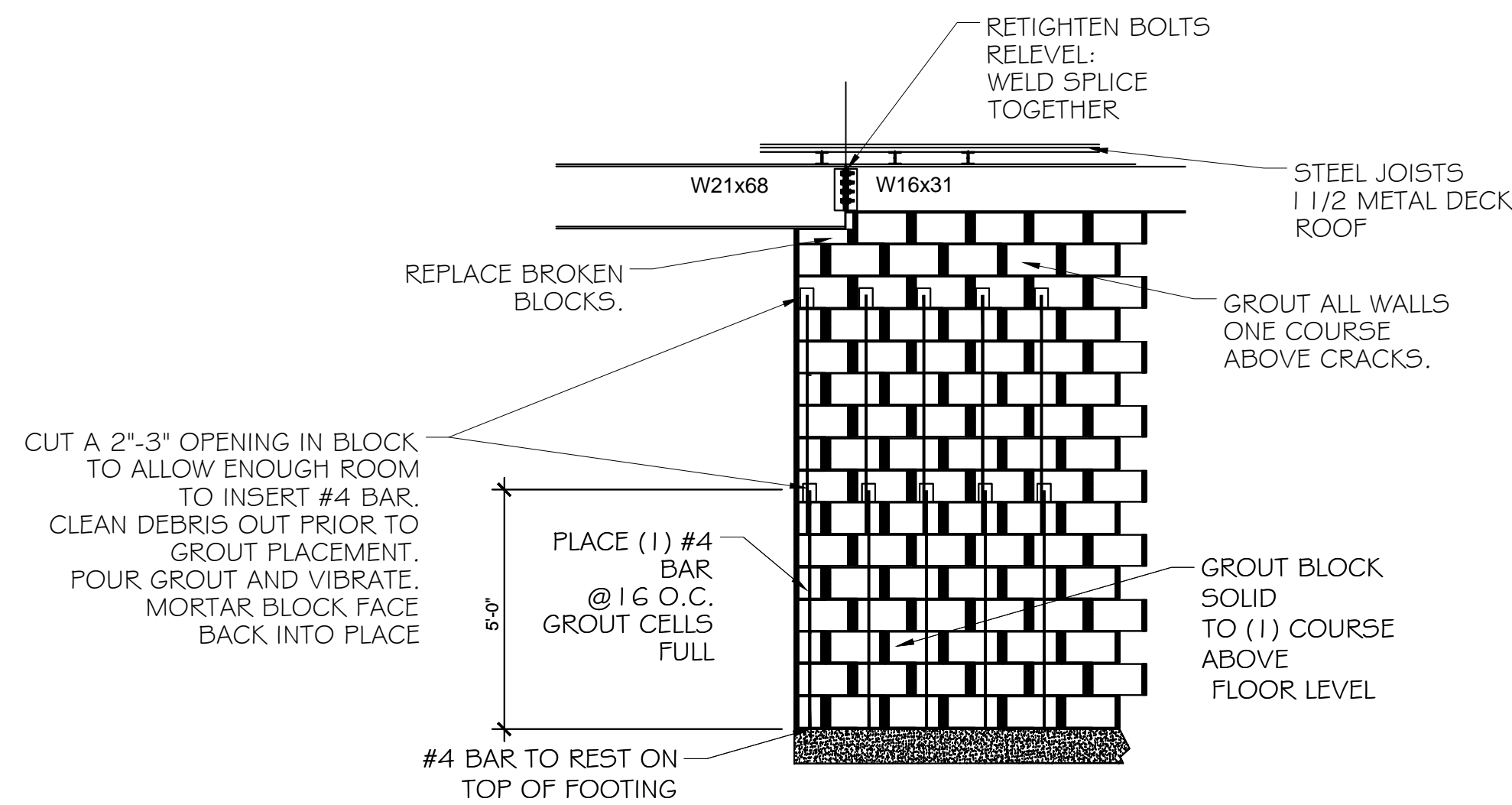
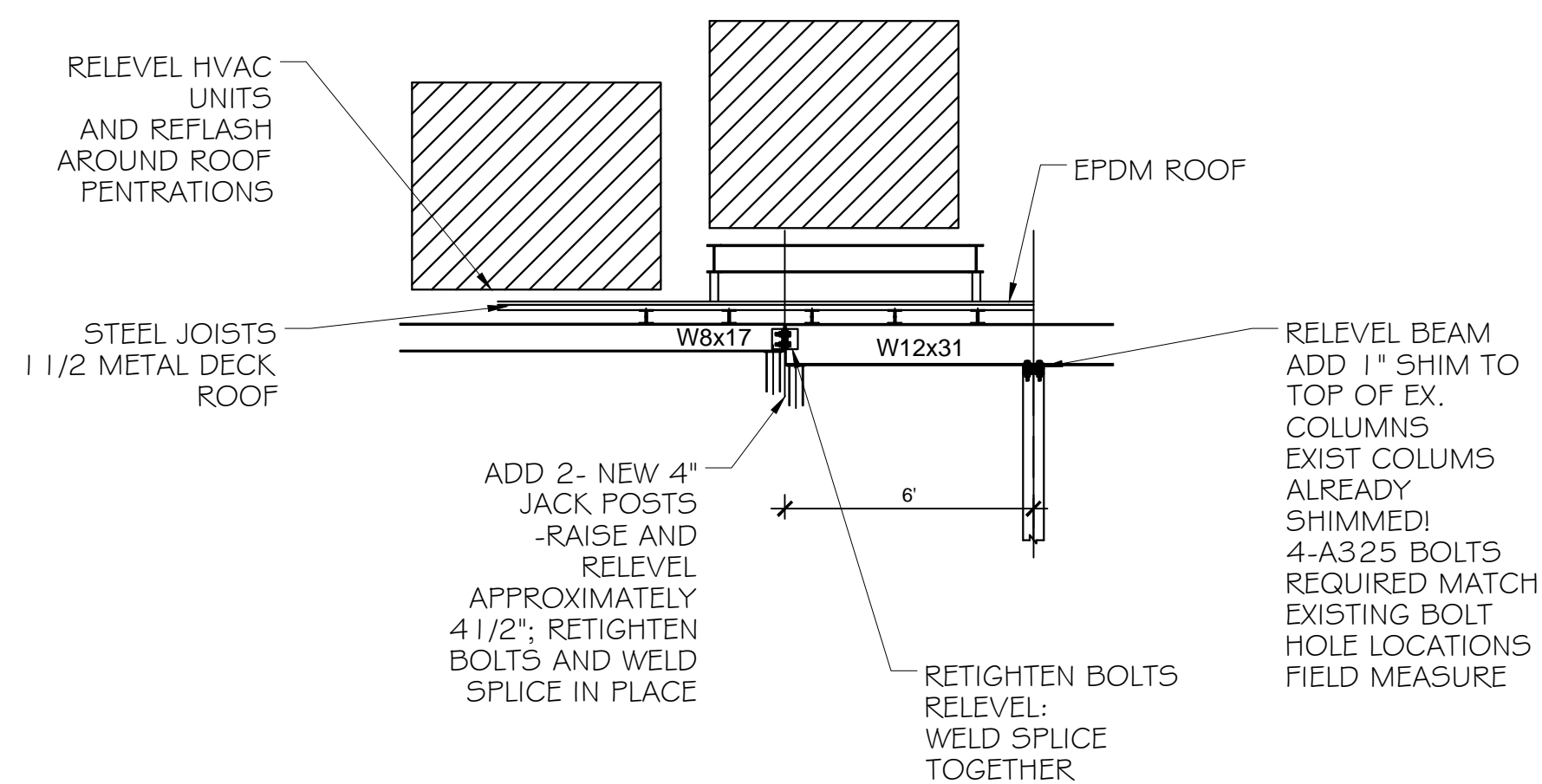


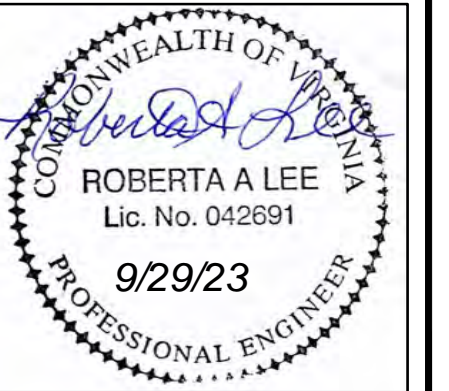
DETAIL "X"  
GROUT EXISTING CMU WALL



DETAIL "Y"  
REPAIR UNDER BEAMS @ SECTION C-C



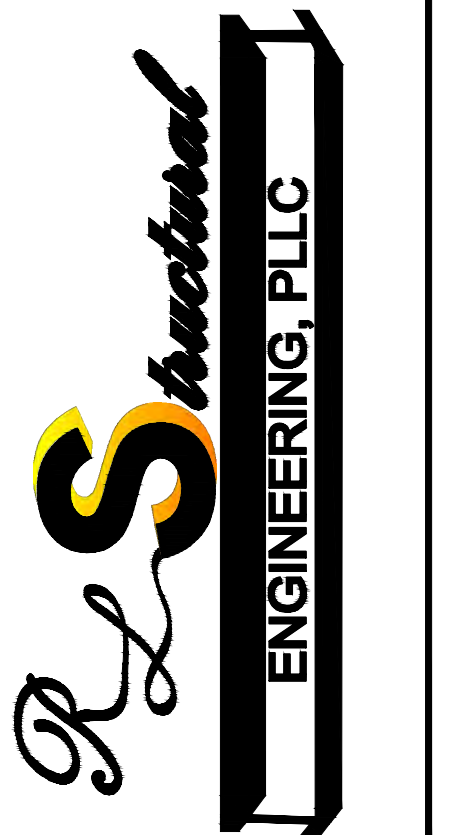
DETAIL "Z"  
NEW COLUMNS @ BEAMS



TAZEWELL COUNTY LIBRARY  
RENOVATIONS  
TAZEWELL, VIRGINIA

101 REYNOLDS AVE  
BLUEFIELD, VA 24605

276-245-8977  
RLSENG.COM



NO.	DATE	REVISION	BY

DWG TITLE

DETAILS

ENGINEER <i>R. LEE/E. HESS</i>	CHECKED BY
JOB NO. P221044	DRAWN BY S.C./RAL
SCALE NOT-TO-SCALE	DATE 09/29/23

S5-R0

SHEET NO  
8 OF 8